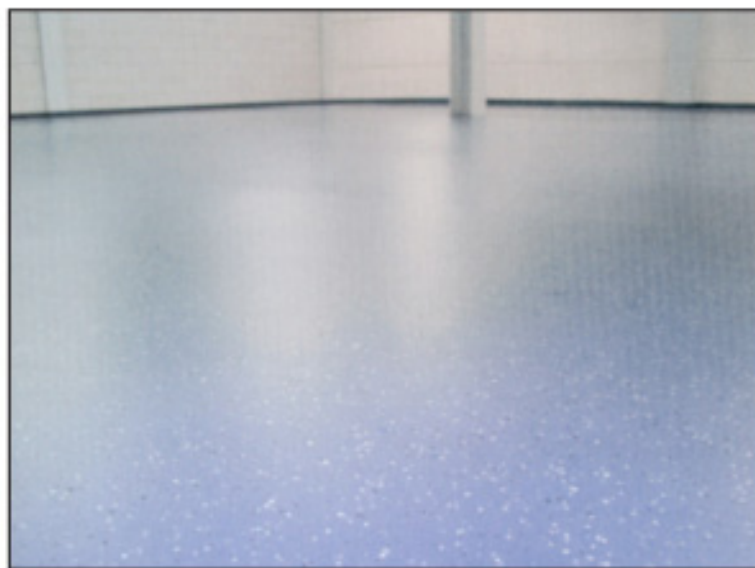


# touchstone

## INDUSTRIAL WATER BASED EPOXY FLOOR PAINT

*touchstone floors ltd*, a manufacturer of industrial floor paints and coatings, are pleased to introduce their new GW/V range of two component, water based, epoxy floor paint. This product has had six years of field development and is not just a laboratory-developed product. It wears as well if not better than solvent free versions and has a better chemical resistance. Available as a satin finish in nearly all Ral colours it has excellent scratch and stain resistance. The satin matt finish, which is not available in solvent free products, gives a flatter uniform result, which camouflages imperfections. Its adhesion is superior to solvent free equivalents and therefore requires primers only in very exceptional circumstances. Primer would be required on ceramic tiles for wall paints etc. In comparison with solvent free epoxies *touchstone* GW/V coatings are very easy and therefore quicker to apply.



The usual surface preparation is required i.e. grease, flake and dust free. Further decorative effects can be achieved using coloured flakes (see our coloured flake swatch) and further sealed with our water based epoxy matt or polyurethane coats. Application of each set must be carried within 40 minutes of mixing both components, which is a longer working time than solvent free equivalents at 23°C. Two coats can be applied in one day of up to 250 grams per square metre per coat. Minimum coverage is 150 grams per square metre but more may be required if the substrate is light in colour or particularly absorbent.

*touchstone*  
Industrial & Resin Floor Supplies

13 Winberry Avenue  
North Anston  
Sheffield  
S25 4G2

web: [touchstonefloors.co.uk](http://touchstonefloors.co.uk)  
email: [enquiries@touchstonefloors.co.uk](mailto:enquiries@touchstonefloors.co.uk)